



SERGER STITCH ON SEWING MACHINE



Can You Serge With A Regular Sewing Machine?

No, you can't fully serge with a regular sewing machine, because a true serger trims the fabric edge and finishes it with multiple threads in one go.



Serger Attachment For Sewing Machine

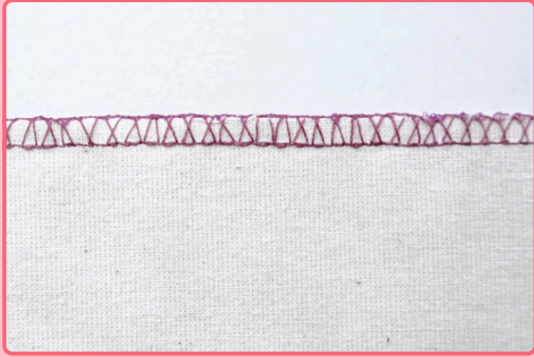
A serger or overcasting foot is an excellent attachment that allows you to sew right up to the fabric edge while achieving a similar overlock finish.



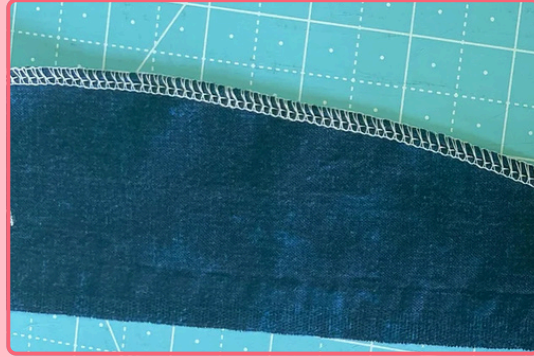


What Is a Serger Stitch on Sewing Machine?

11 Types Of Serger Stitch



Overedge



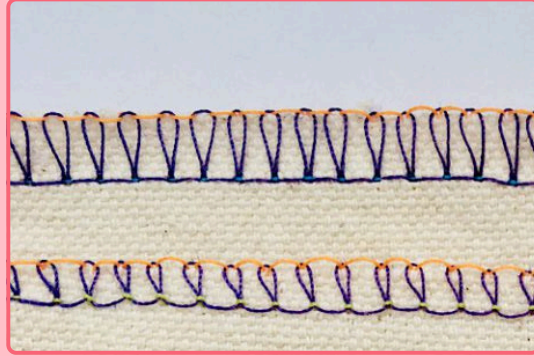
Chainstitch



4-Thread Overlock



Flatlock Stitch



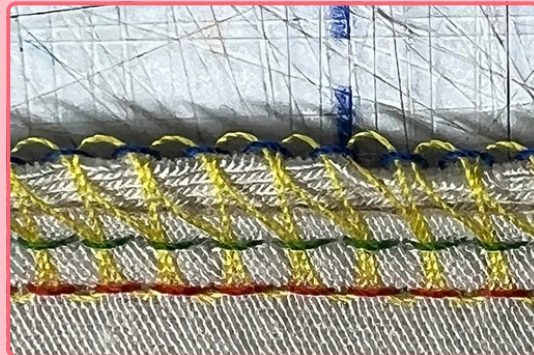
3-Thread Overlock



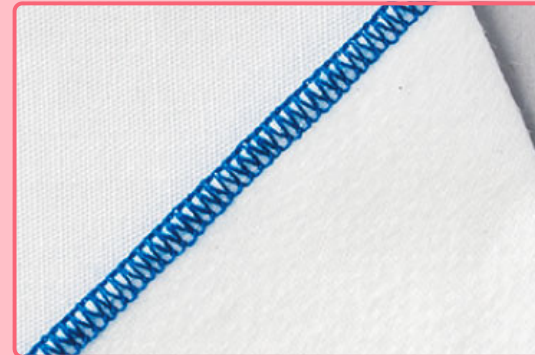
4-Thread Flatlock



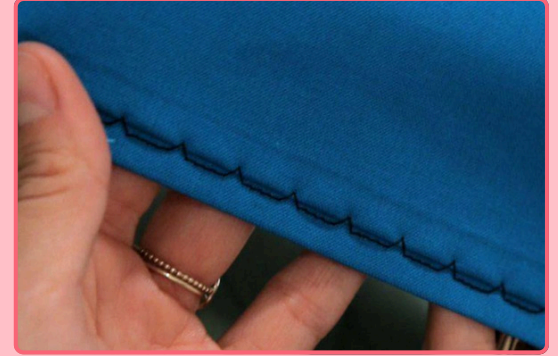
Rolled Hem



3-Thread Flatlock



5-Thread Stitch



Blind Hem Stitch



Gathering



Overedge / Overcast Stitch



Flatlock Stitch



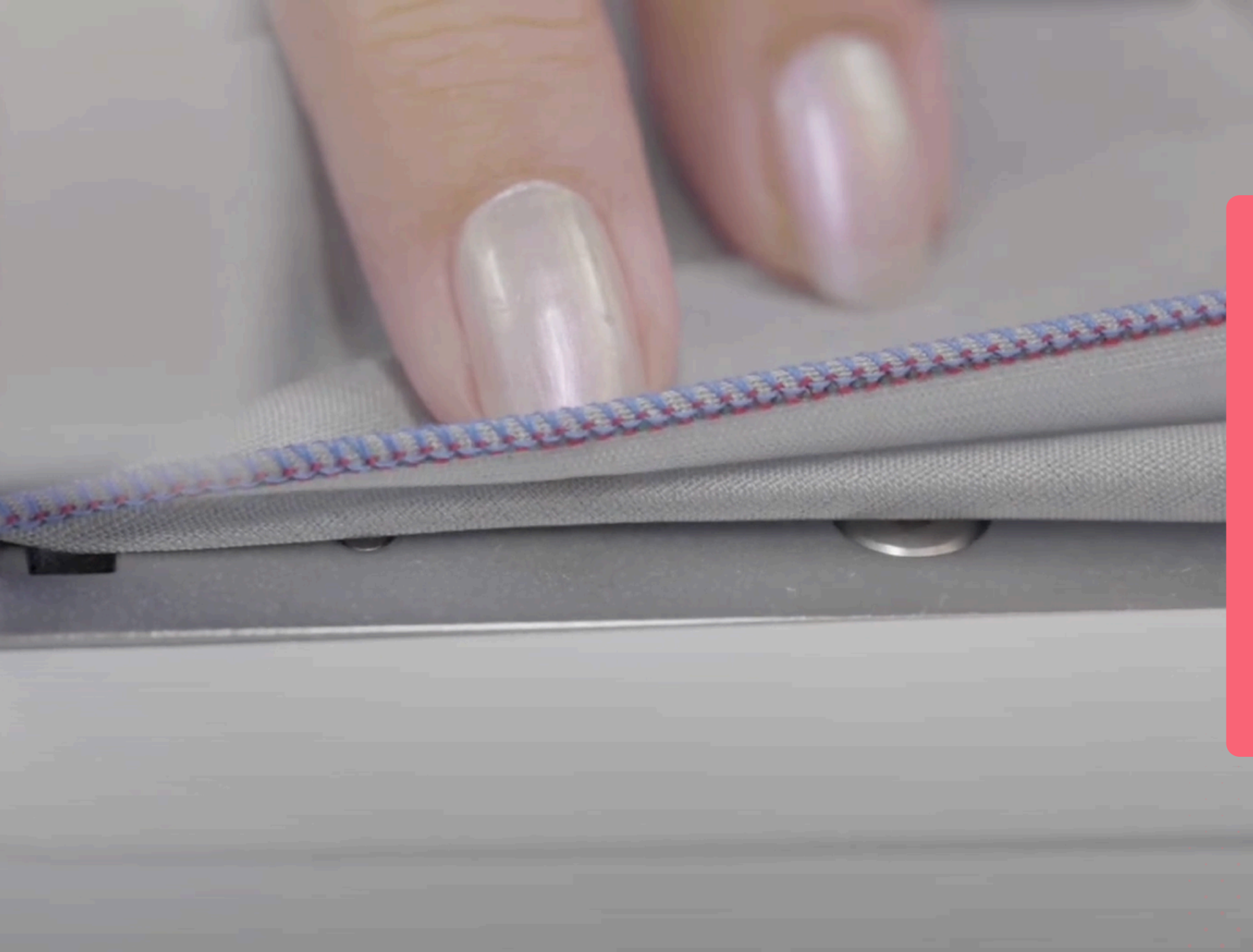
Rolled Hem Serger Stitch



Inspire
Sewing



Chainstitch



3-Thread Overlock

3-Thread Flatlock



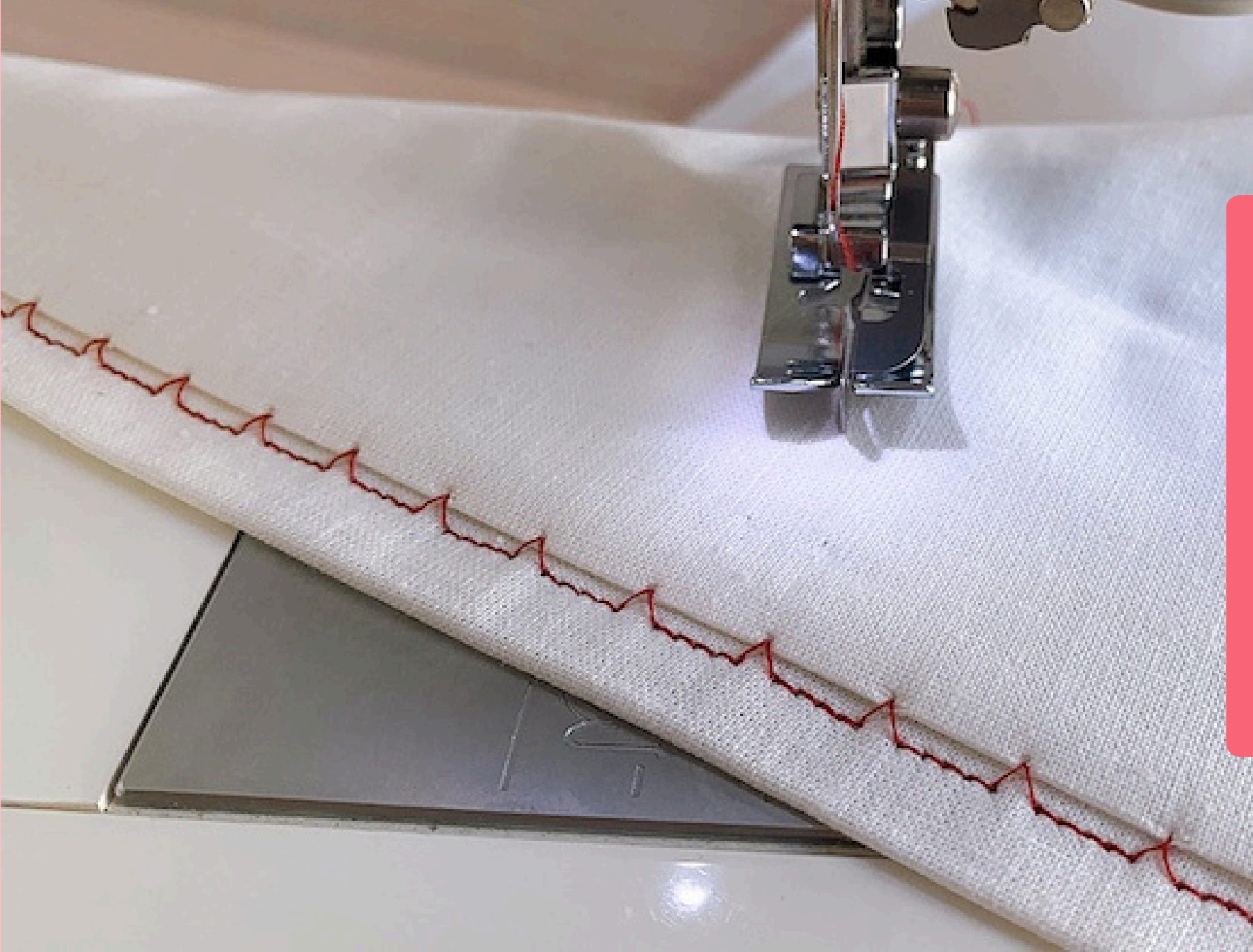
4-Thread Overlock



4-Thread Flatlock



5-Thread Stitch



Blind Hem Stitch

Gathering / Ruffling Stitch

