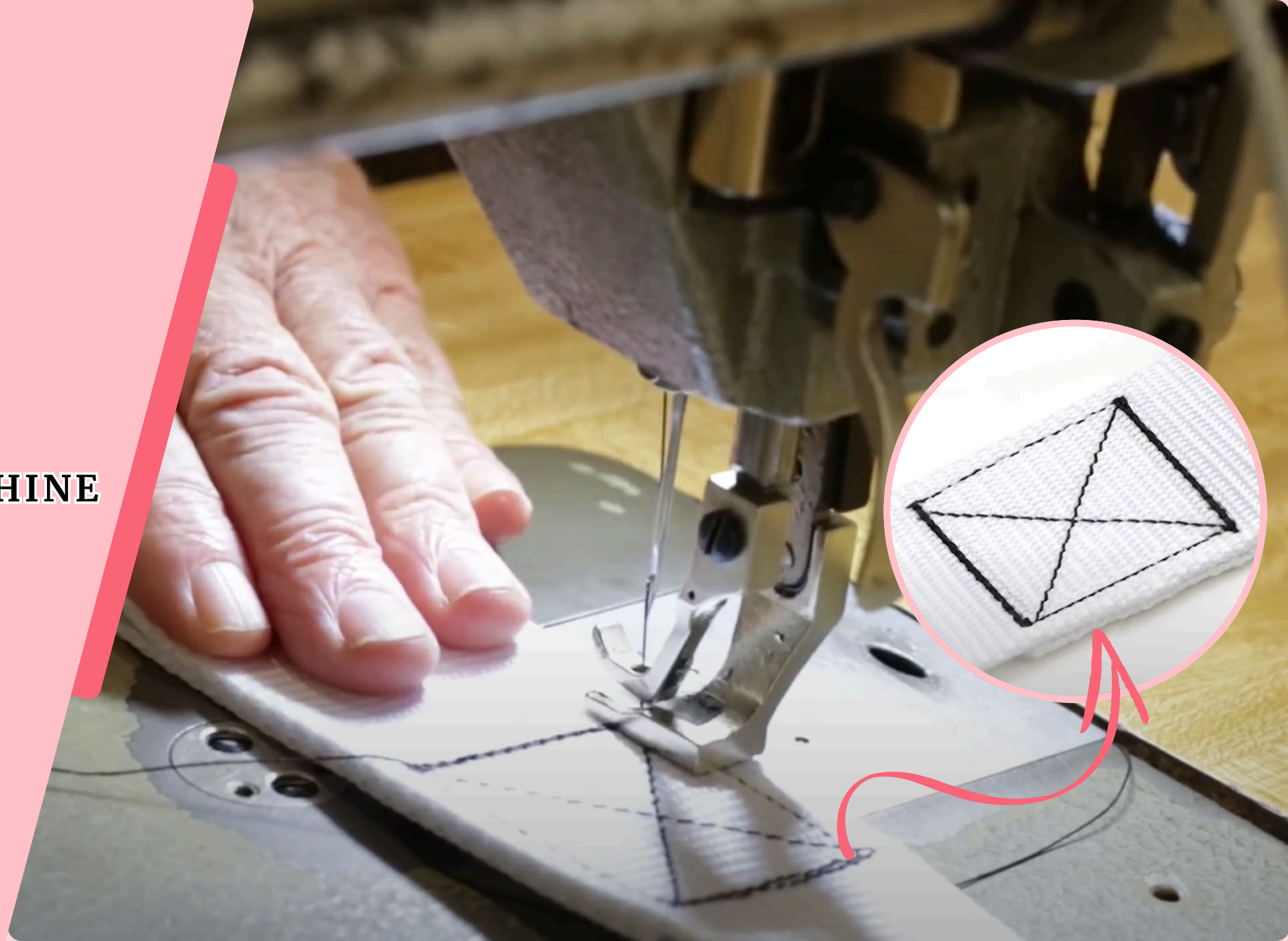
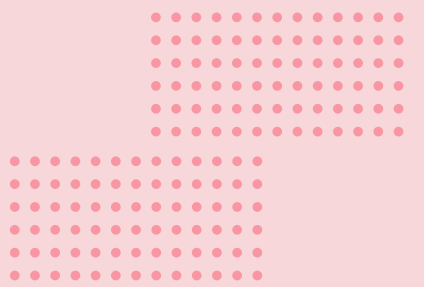




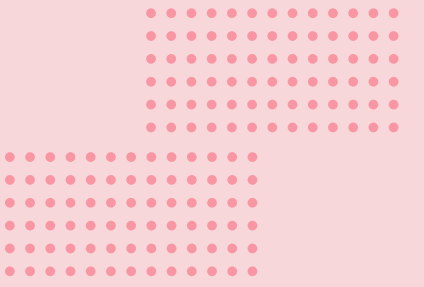
BOX STITCH SEWING MACHINE



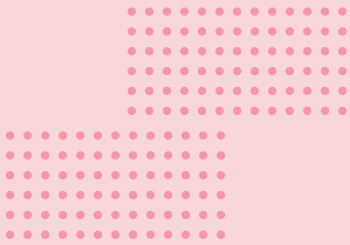
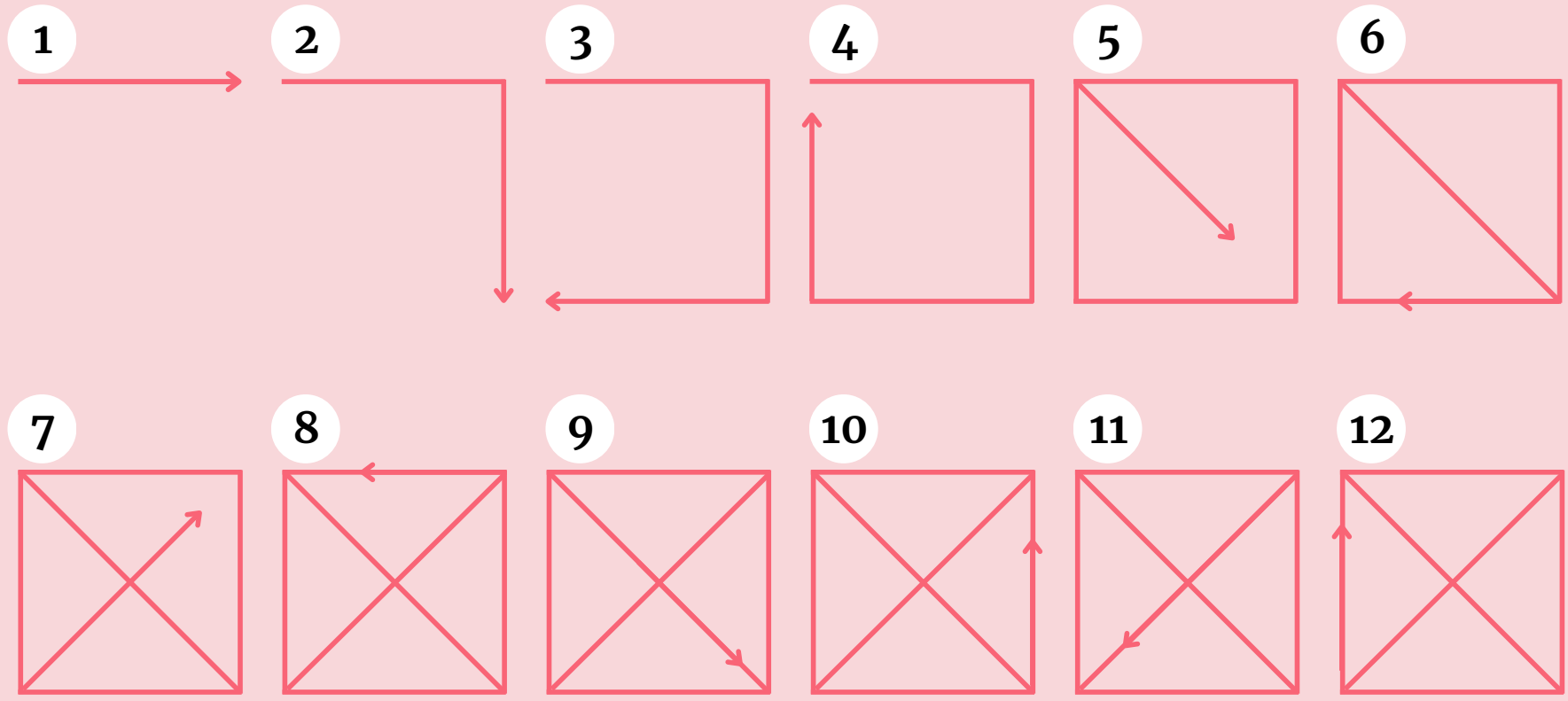
What Is A Box Stitch Sewing Machine?



Secure the ends by backstitching at the beginning and end of your x box, or leave your thread tails long and tie the two top threads and the two bobbin threads together in a square knot before cutting the ends off



Sewing a 2-layer x box:



How To Do Box Stitch Sewing Machine?



Position the Needle



Do Stitch Straight



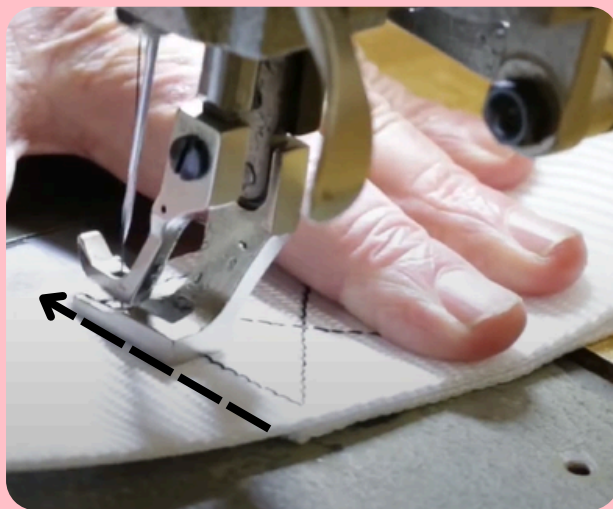
**Diagonal Stitch to
Opposite corner**



**Turn The Fabric And
horizontally stitch**



**Stitch the Second
Diagonal of the "X"**




Sew the Bottom Edge



**Complete the Last vertical
stitch**



Lock the Stitch

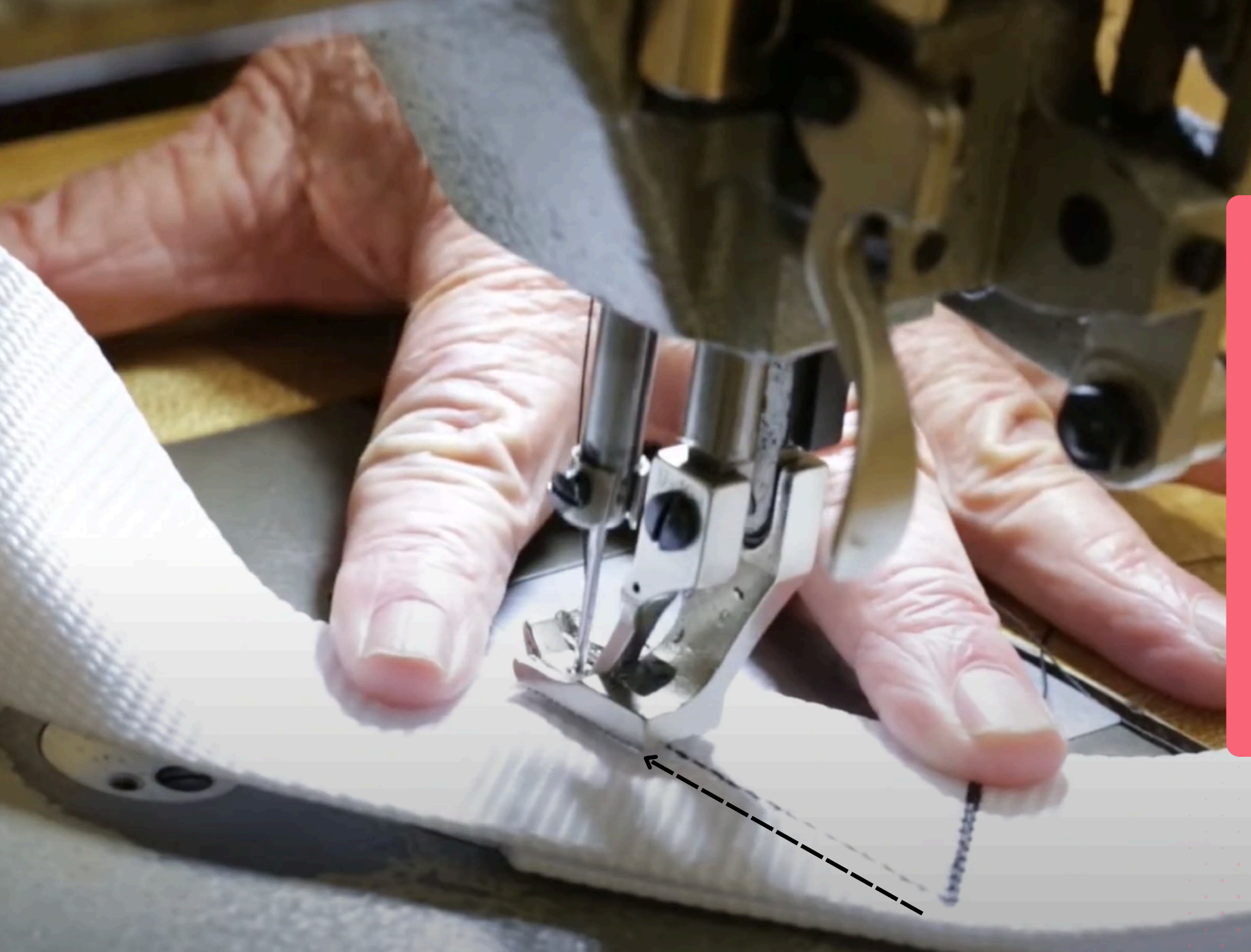


**Position the Needle and
Start Inside the Edge**



**Now I Stitch Straight
Down Along The Side**

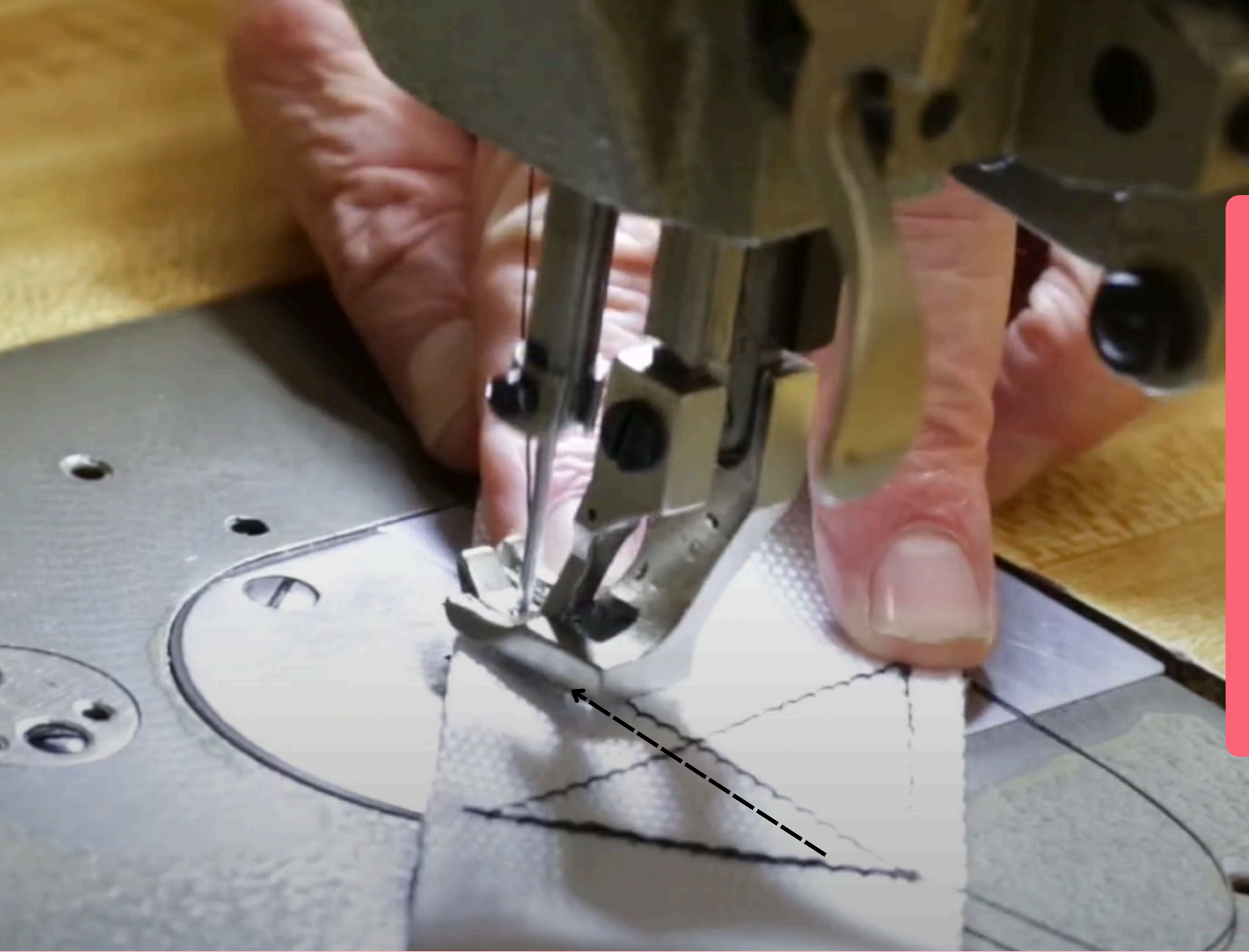
Diagonal Stitch to Opposite Corner



**Turn The Fabric and
Stitch the Horizontal
Line**



**Stitch the Second
Diagonal of the “X”**



Sew the Bottom Edge





**Complete the Last
Vertical Line**

Lock the Stitch

