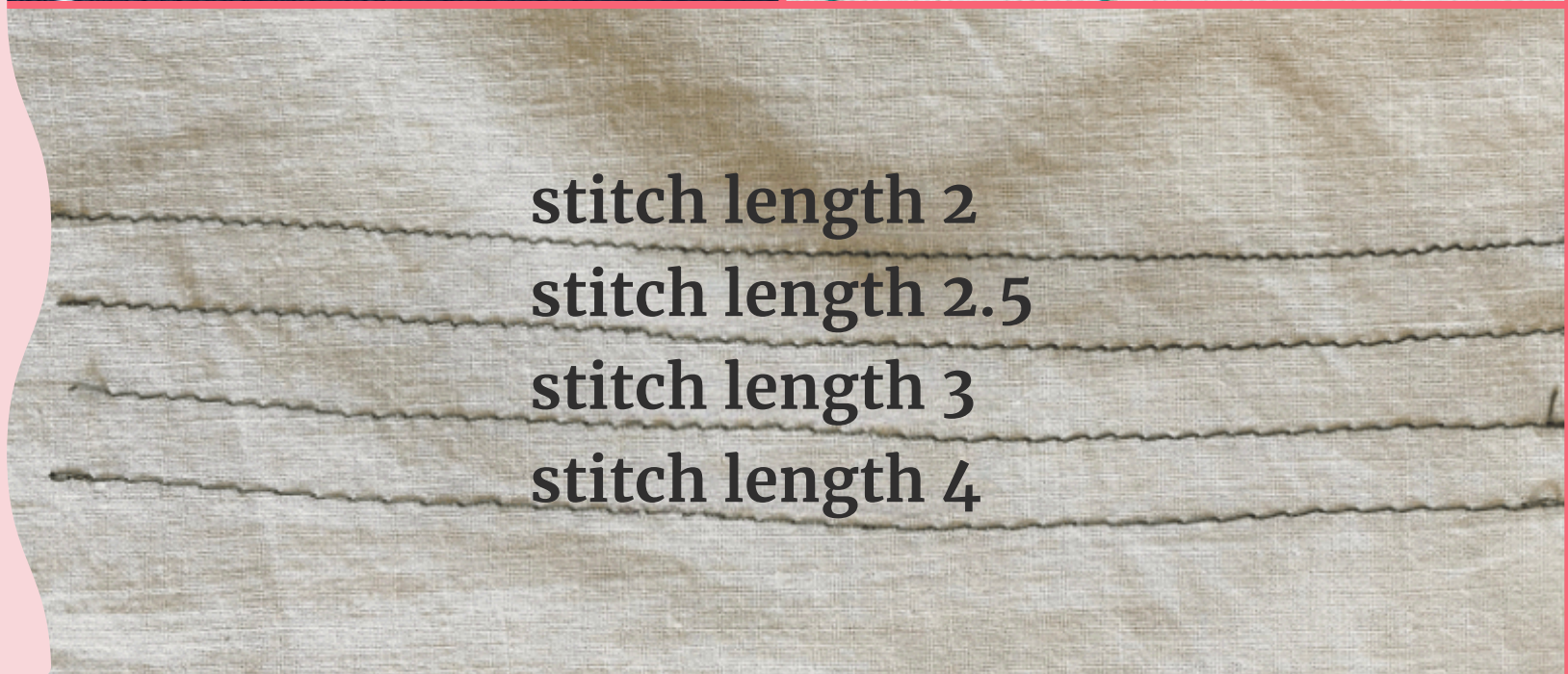
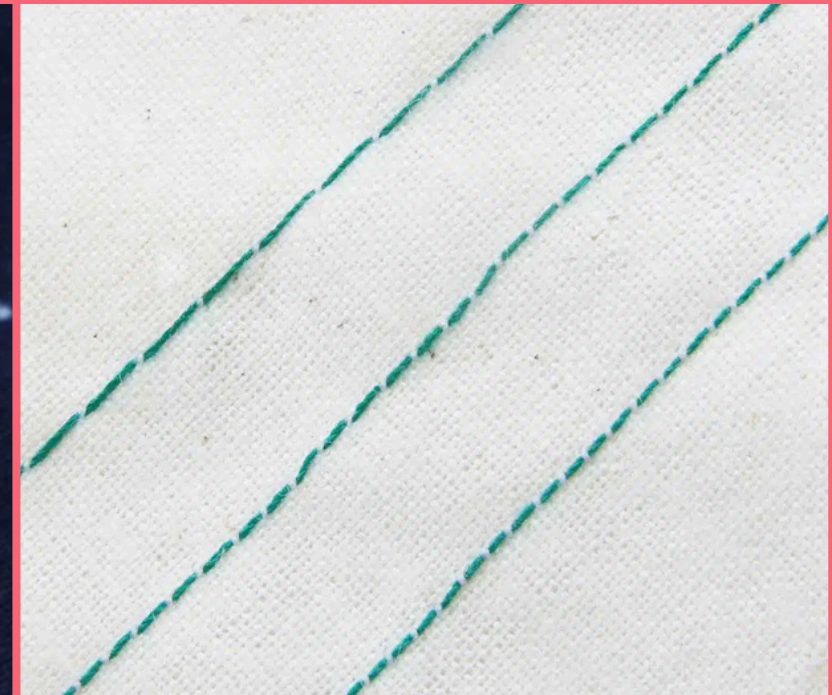
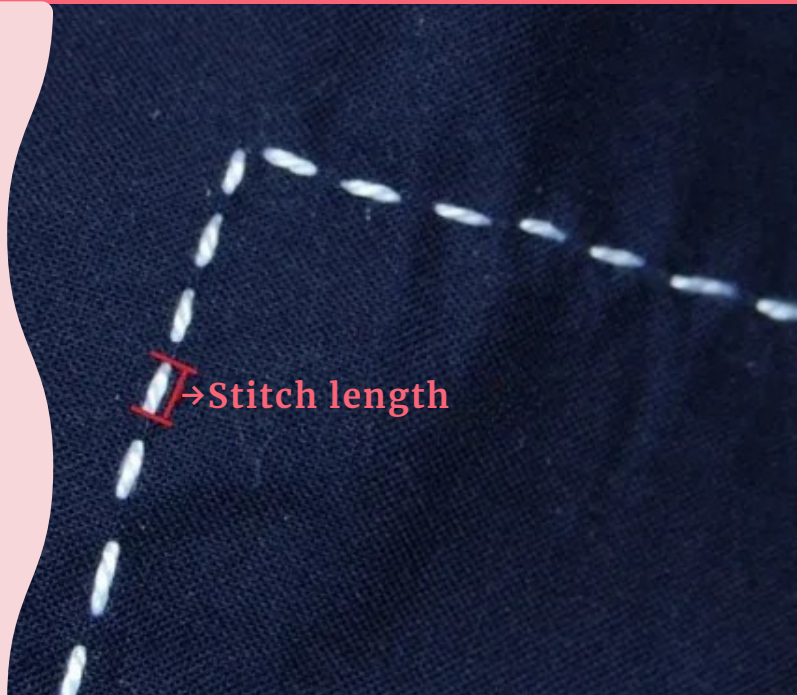


Top Stitch Length

REAL-LIFE LENGTH EXPERIMENT



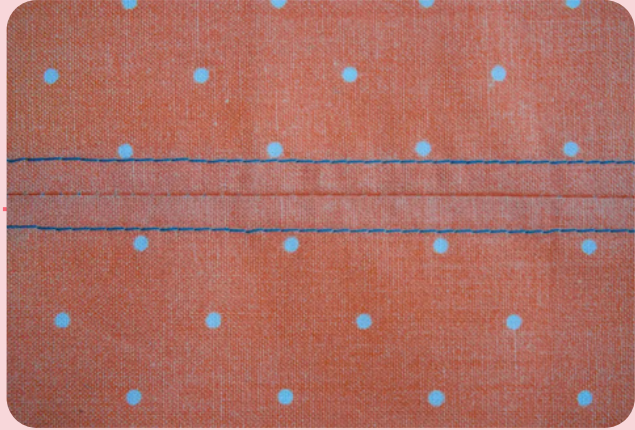
stitch length 2

stitch length 2.5

stitch length 3

stitch length 4

Top Stitch Length



**Top stitch length on
Lightweight Fabrics**
• 2.5–3 mm



**Top stitch length on
Medium-Weight Fabrics**
• 3 - 3.5 mm



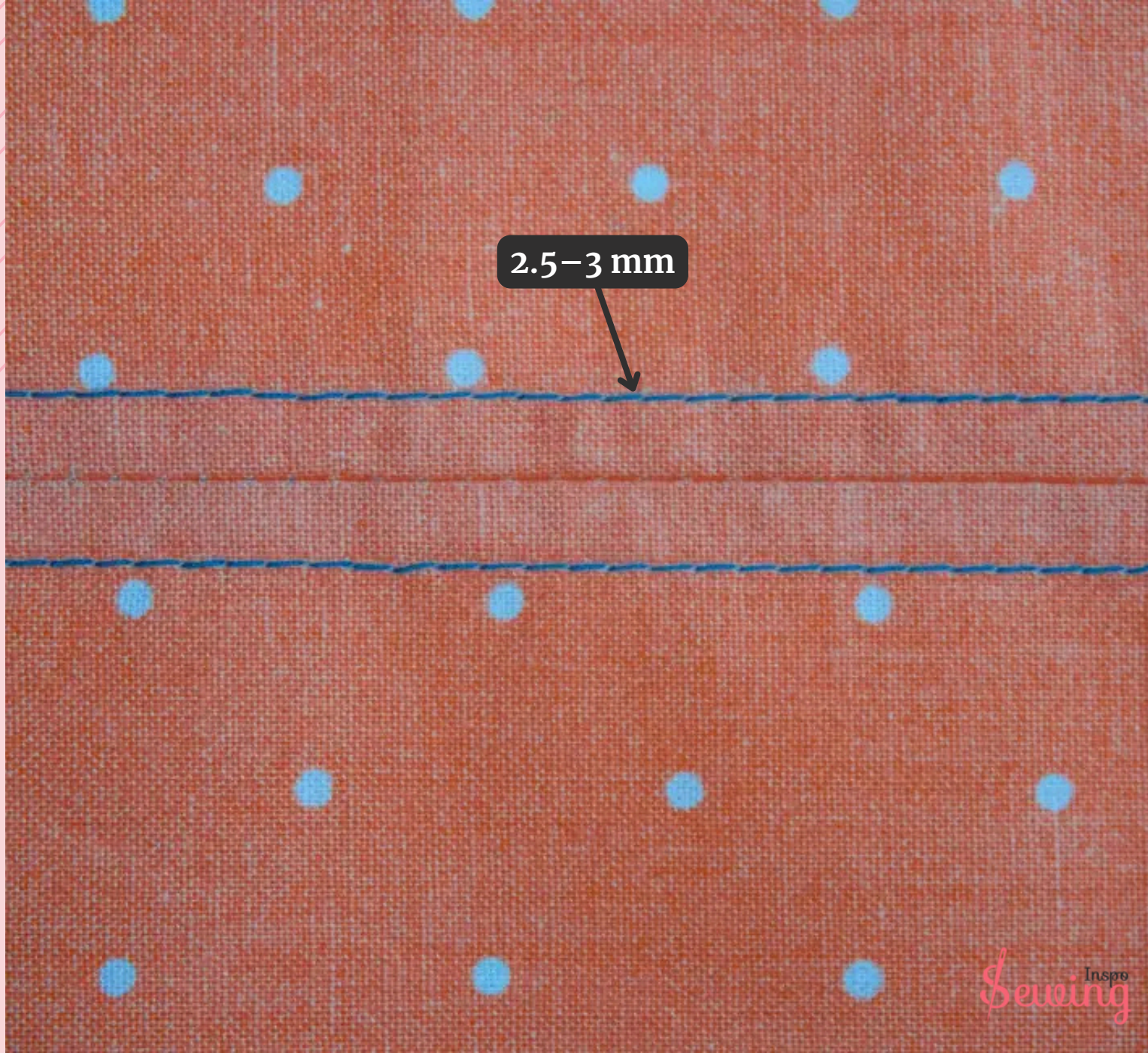
**Topstitching length on
Heavyweight Fabrics**
• 3.5 - 4 mm



**Topstitch Length for
Decorative Stitching**
• 4 - 5 mm

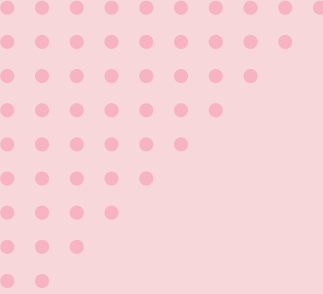


Top stitch
length on
Lightweight
Fabrics



Top stitch
length on
Medium-
Weight Fabrics





Topstitching length on Heavyweight Fabrics





Topstitch Length For Decorative Stitching

